



Figure 3: LHAAP, Starr Ranch (Building 99Y), north elevation.  
(Source: Field inventory photograph, 1983, Stuart  
MacDonald, MacDonald and Mack Partnership.)



Figure 4: LHAAP, Administration Building (Building 703), north and west elevations. (Source: Field inventory photograph, 1983, Stuart MacDonald, MacDonald and Mack Partnership.)

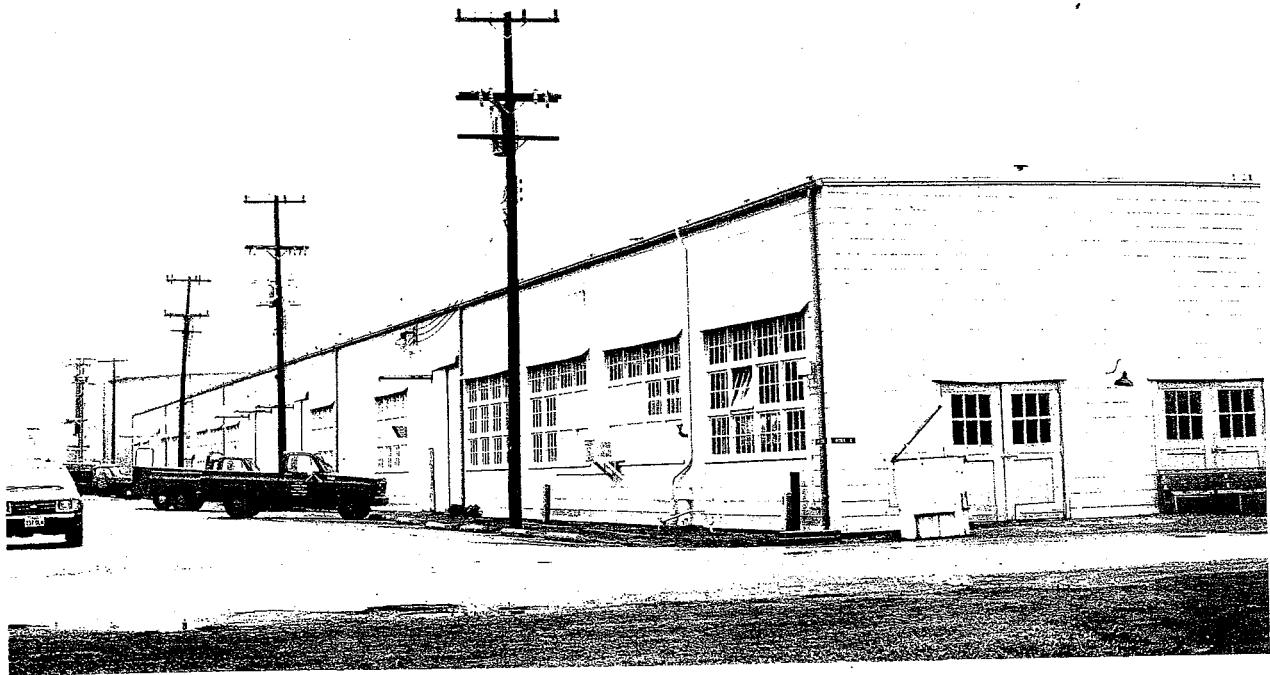


Figure 5: LHAAP, Metal and Woodwork Shop (Building 717), southwest and southeast elevations. (Source: Field inventory photograph, 1983, Stuart MacDonald, MacDonald and Mack Partnership.)

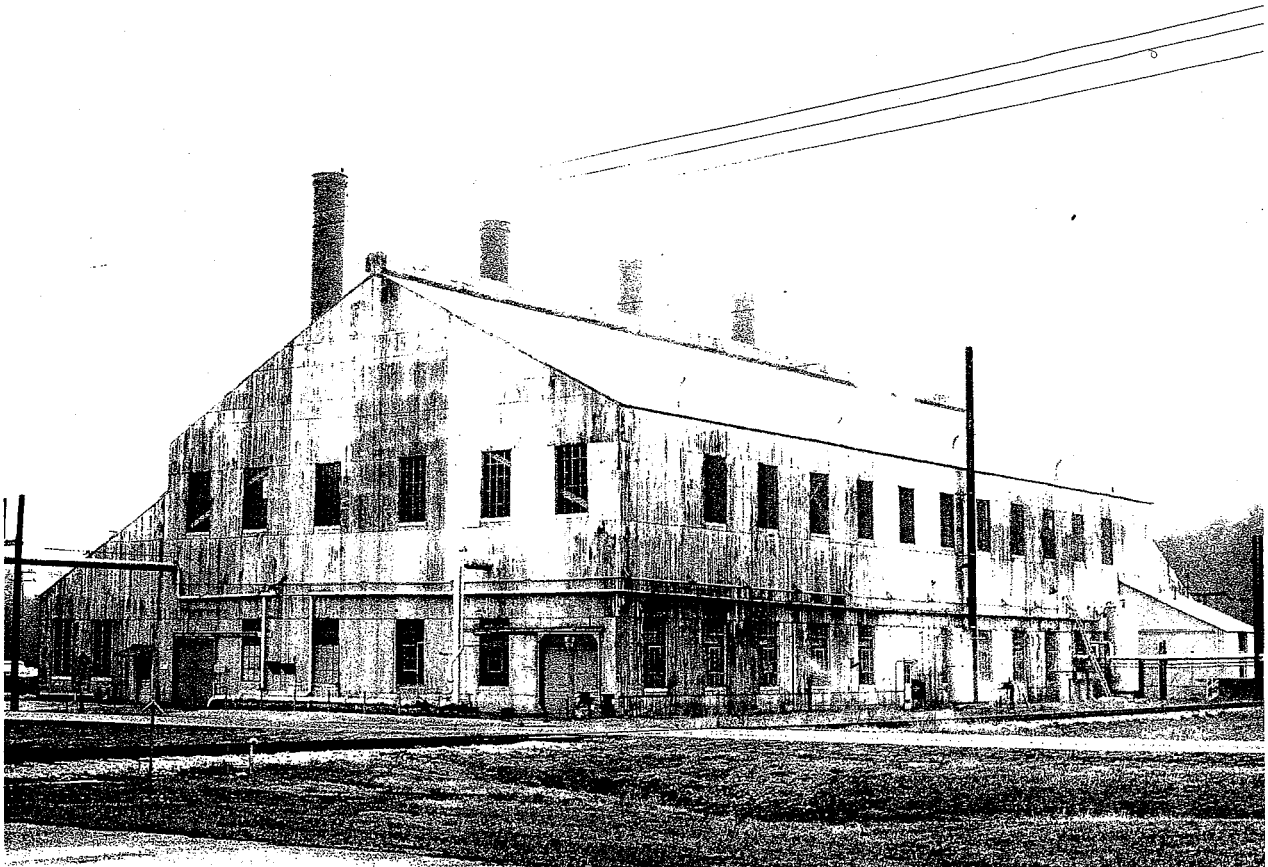


Figure 6: LHAAP, Heating Plant (Building 401), northwest and northeast elevations. (Source: Field inventory photograph, 1983, Stuart MacDonald, MacDonald and Mack Partnership.)



Figure 7: LHAAP, Water Pump House (Building 414), east elevation. The pump house is located on Black Cypress Bayou, northwest of the Shop Area. (Source: Field inventory photograph, 1983, Stuart MacDonald, MacDonald and Mack Partnership.)



Figure 8: LHAAP, Richmond Magazine (Building 811-1), southeast elevation. (Source: Field inventory photograph, 1983, Stuart MacDonald, MacDonald and Mack Partnership.)

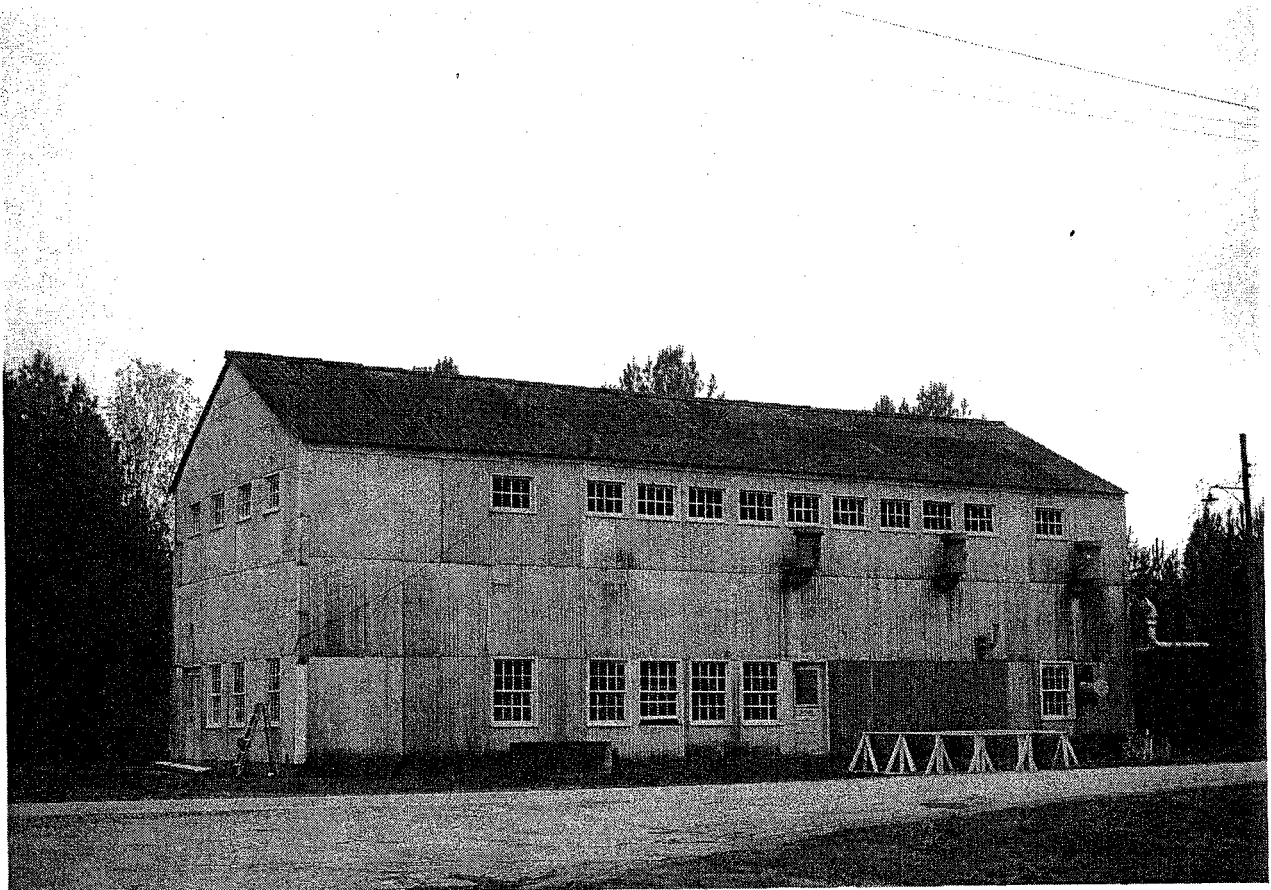


Figure 9: LHAAP, Air Compressor House (Building 451), west and north elevations. One of the few surviving buildings from the World-War-II-era TNT Area. (Source: Field inventory photograph, 1983, Stuart MacDonald, MacDonald and Mack Partnership.)



Figure 10: LHAAP, Record Storage Buildings (Buildings 308A, 308B), southwest and southeast elevations. The only surviving buildings from the World-War-II Acid Area. They may originally have been control buildings. (Source: Field inventory photograph, 1983, Stuart MacDonald, MacDonald and Mack Partnership.)



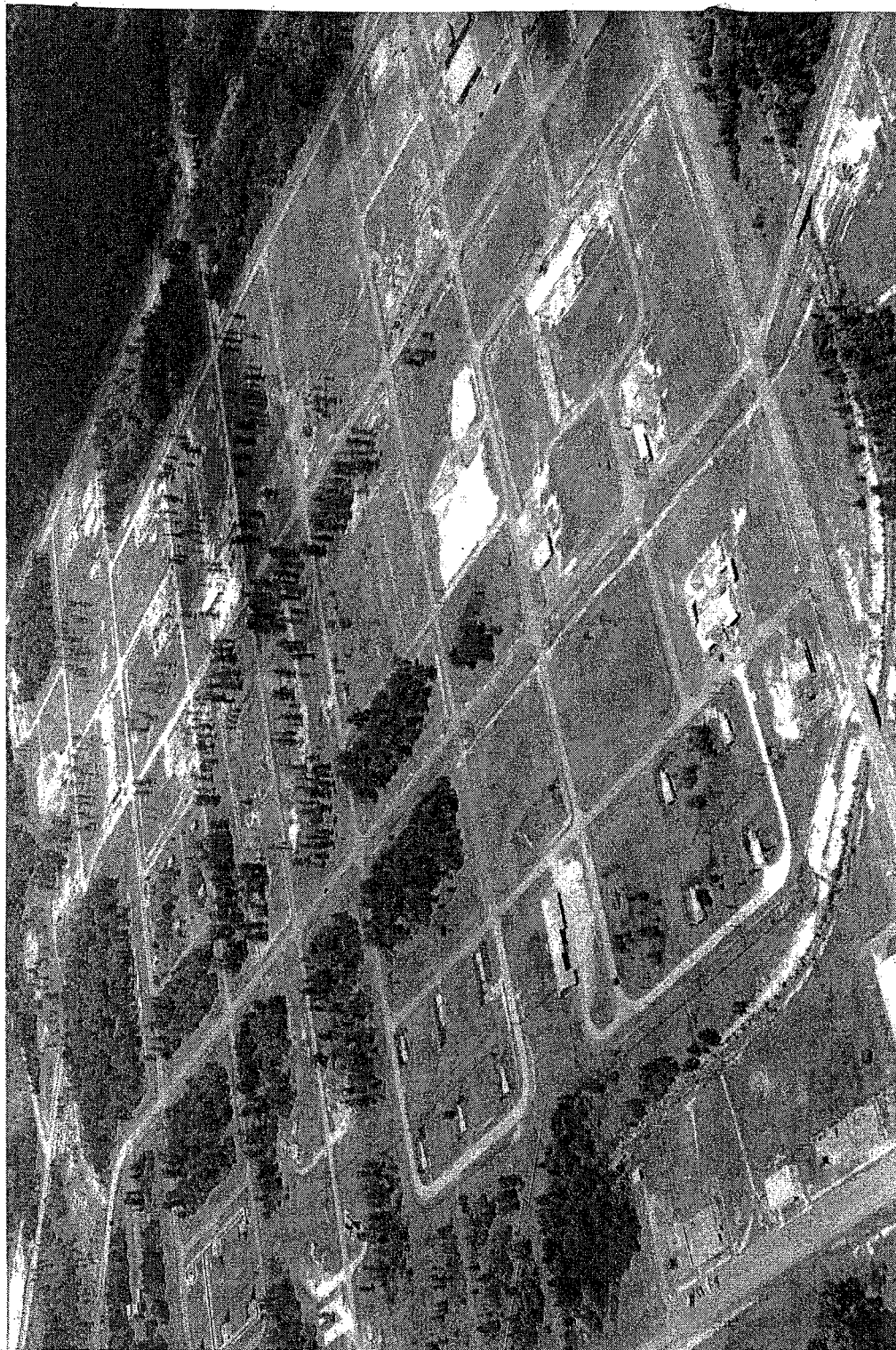


Figure 11: LHAAP, Plant No. 3, looking northeast. This is the World-War-II-era propellant production area, then designated Plant No. 2. (Source: Thiokol Corporation files, LHAAP.)

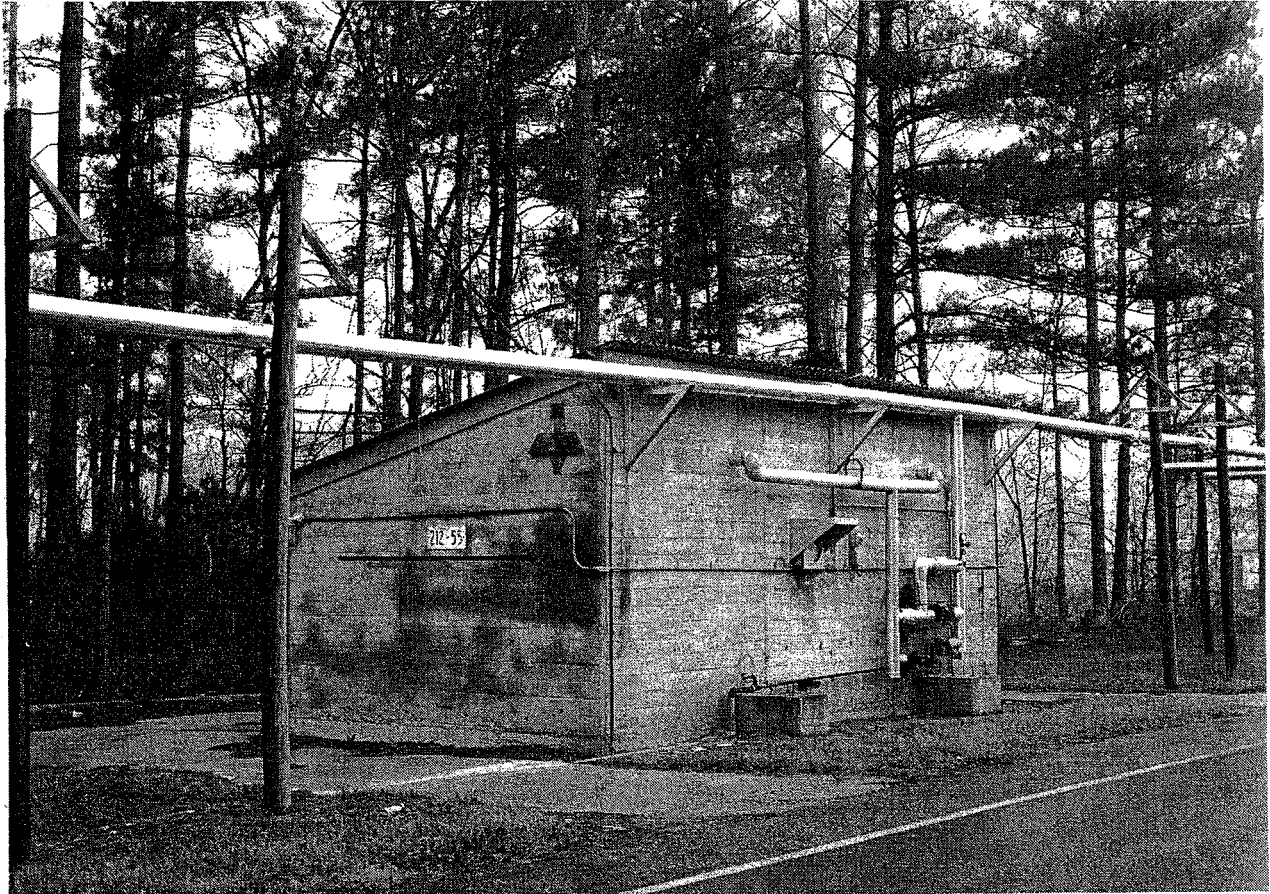


Figure 12: LHAAP, Mill House (Building 212-55), north and east elevations. (Source: Field inventory photograph, 1983, Stuart MacDonald, MacDonald and Mack Partnership.)

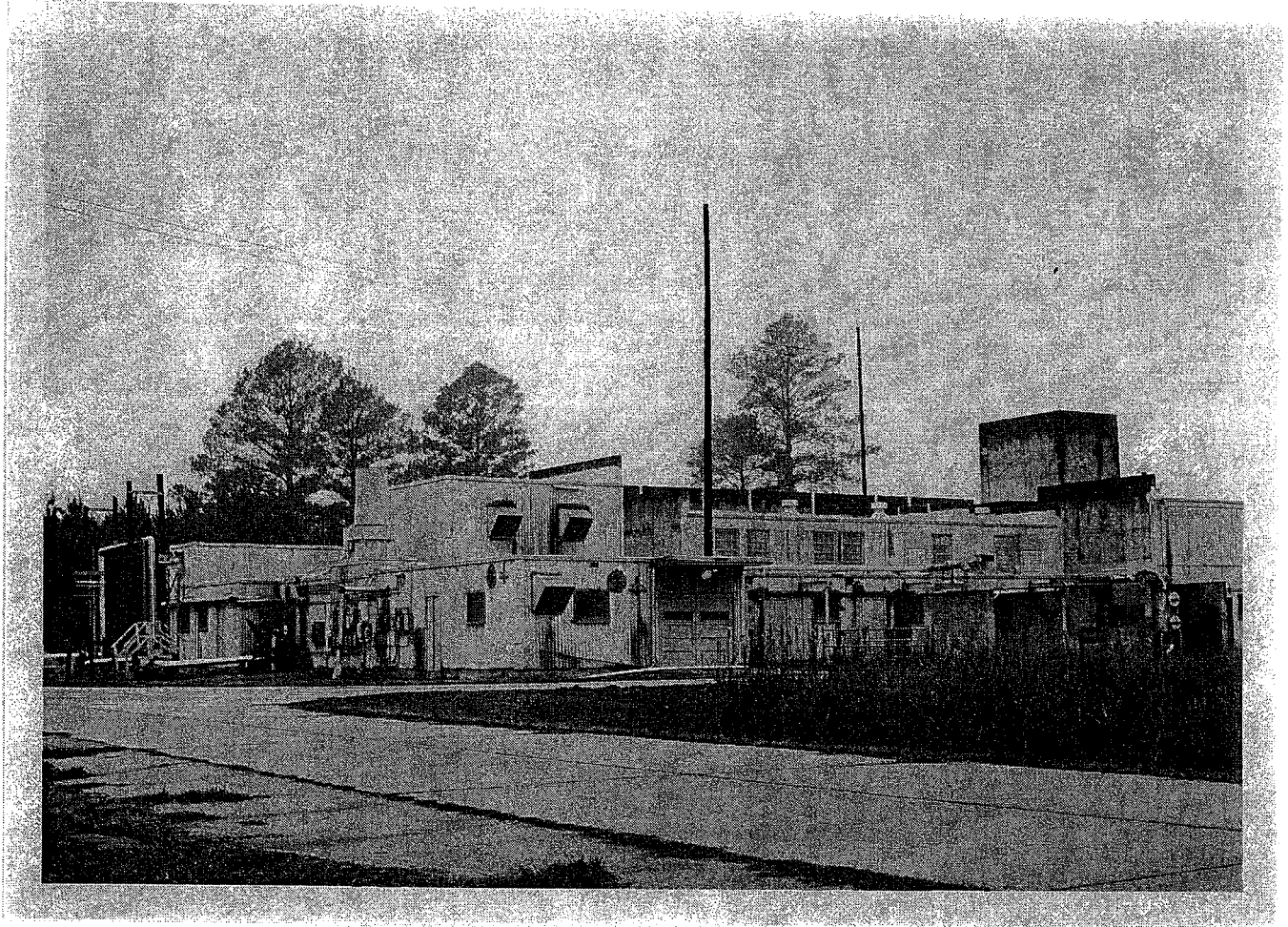


Figure 14: LHAAP, Plant No. 3, pressing and granulating building (Building 54G), south and east elevations. (Source: Field inventory photograph, 1983, Stuart MacDonald, MacDonald and Mack Partnership.)

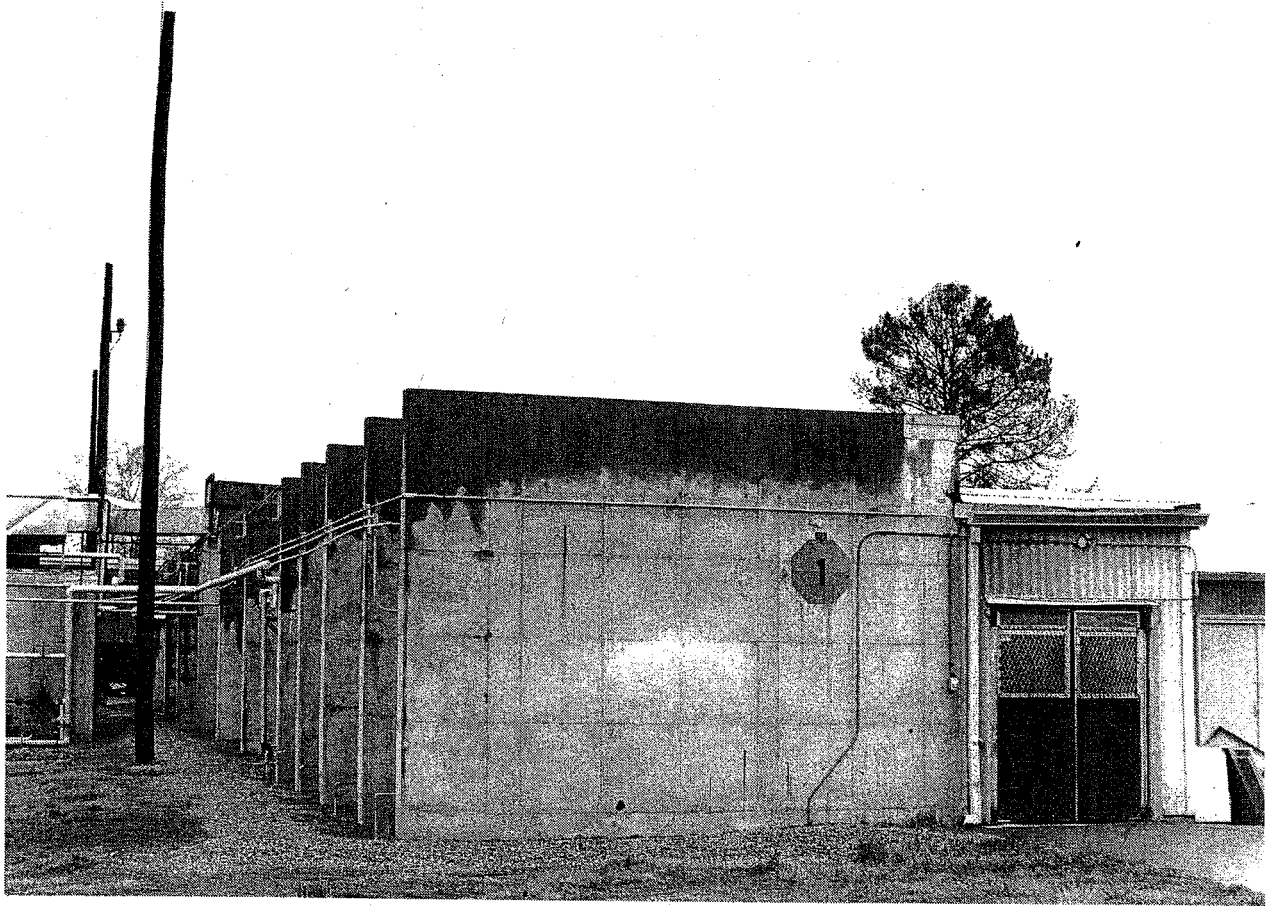


Figure 15: LHAAP, Plant No. 3/Igniter Area, signal assembly building (Building 16Y), northwest and southwest elevations. (Source: Field inventory photograph, 1983, Stuart MacDonald, MacDonald and Mack Partnership.)

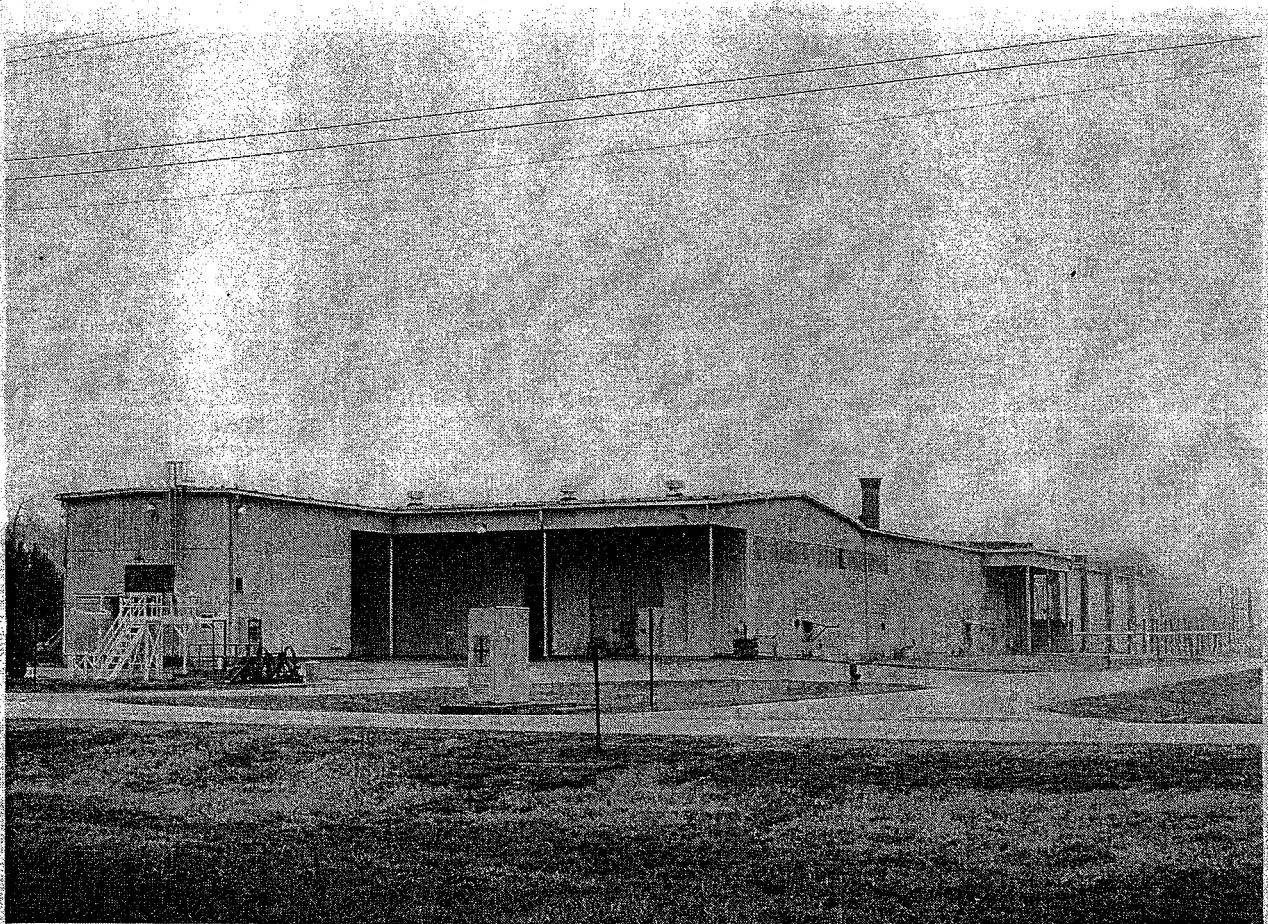


Figure 16: LHAAP, Plant No. 3, Main Rocket Motor Assembly Building (Building 45E), north and east elevations. (Source: Field inventory photograph, 1983, Stuart MacDonald, MacDonald and Mack Partnership.)

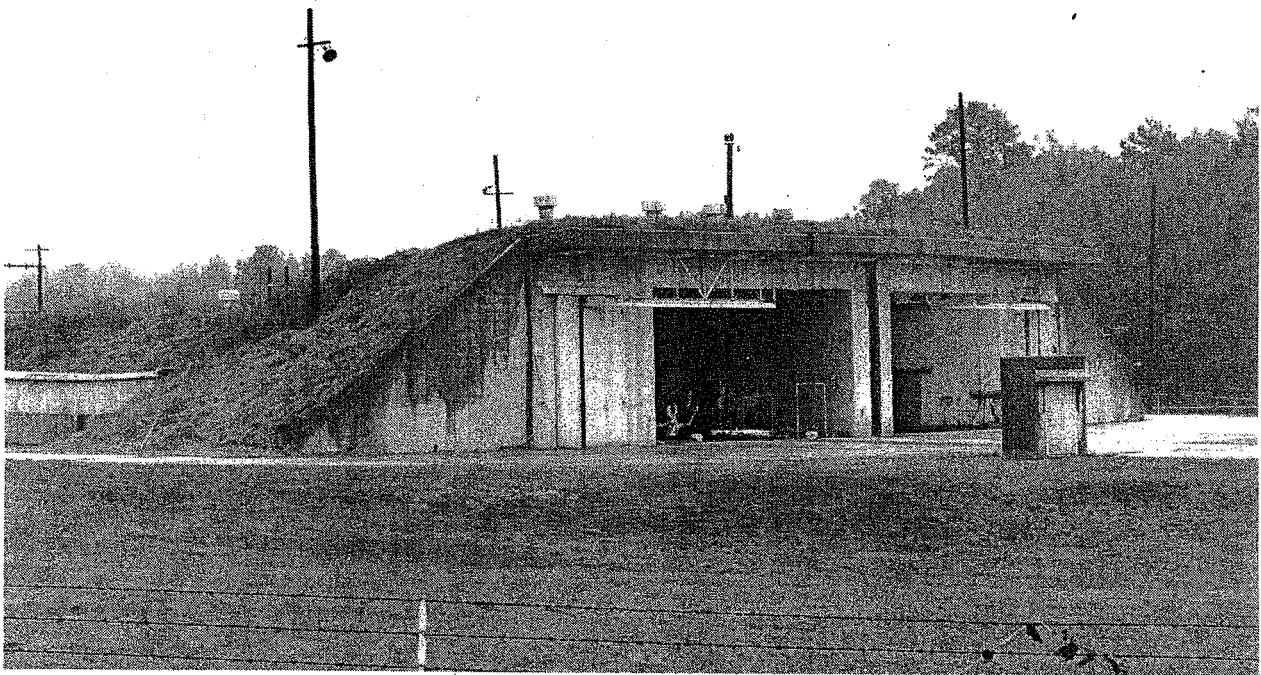


Figure 17: LHAAP, Static Test Area, Static Test Building (Building 25T), south and west elevations. (Source: Field inventory photograph, 1983, Stuart MacDonald, MacDonald and Mack Partnership.)

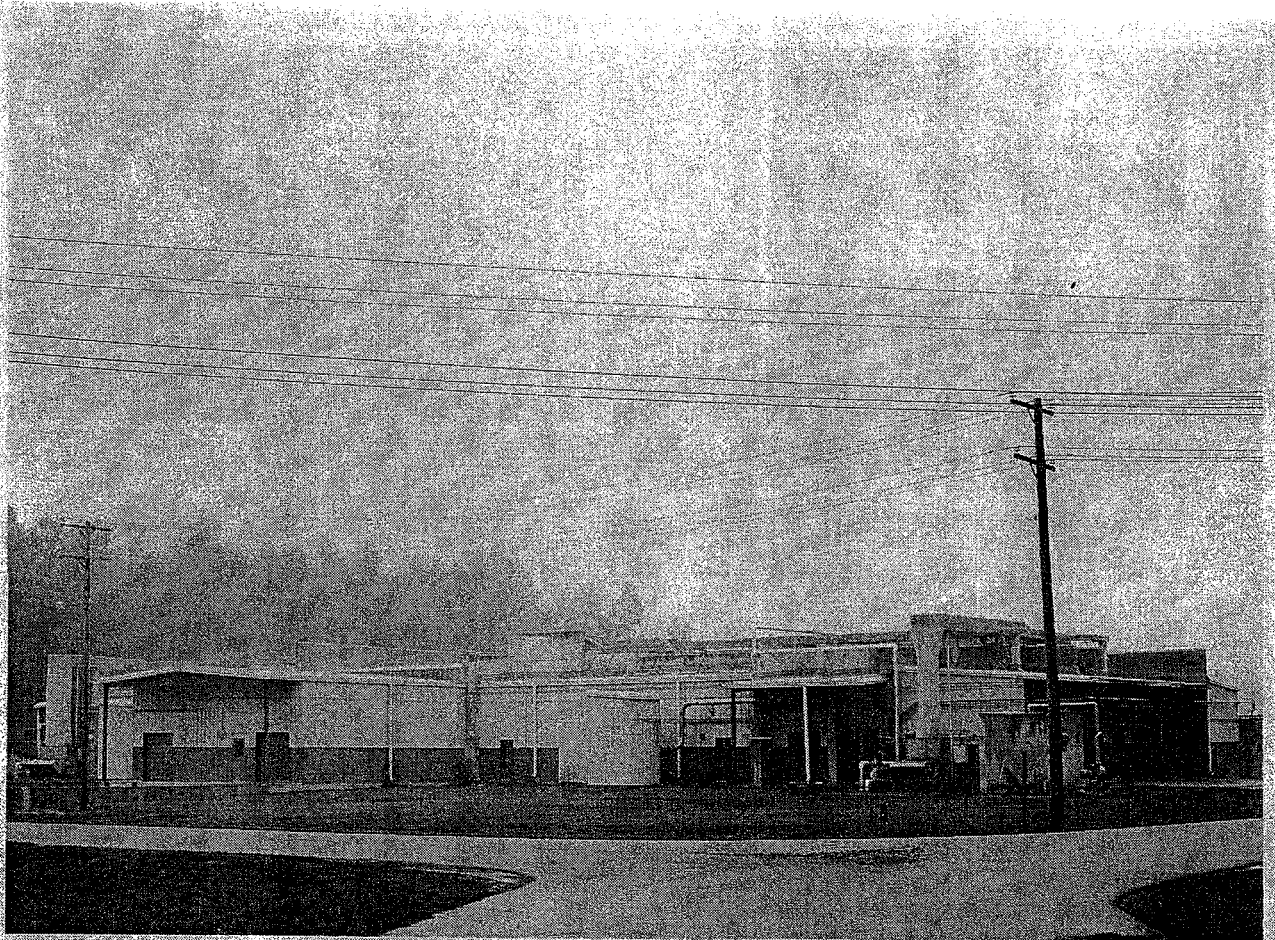


Figure 19: LHAAP, Plant No. 2/"modernization" area, medium-caliber production loading building (Building P118), south and east elevations. (Source: Field inventory photograph, 1983, Stuart MacDonald, MacDonald and Mack Partnership.)